

# Always Precise Weights

**BatchMaster**  
Process Control System

Automation is the logical choice to achieve product consistency and food safety. Batch automation is an essential part of your facilities' overall automation system.

With a CPM Beta Raven BatchMaster, you can store an endless amount of formula, product, and equipment information in our database. Operator access to the database is menu driven to allow information to be easily changed as your needs change. Data can be imported and exported to other systems to allow seamless integration across your enterprise.

Batch	Run	x / y	Recipe	Description	D	Routing	Start	Stop	Edit
1363	804	1 / 5	10002B	Finisher Mash	S	B206			

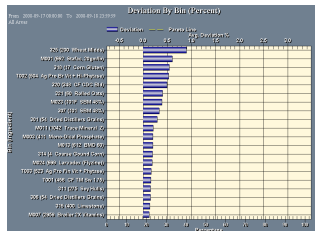
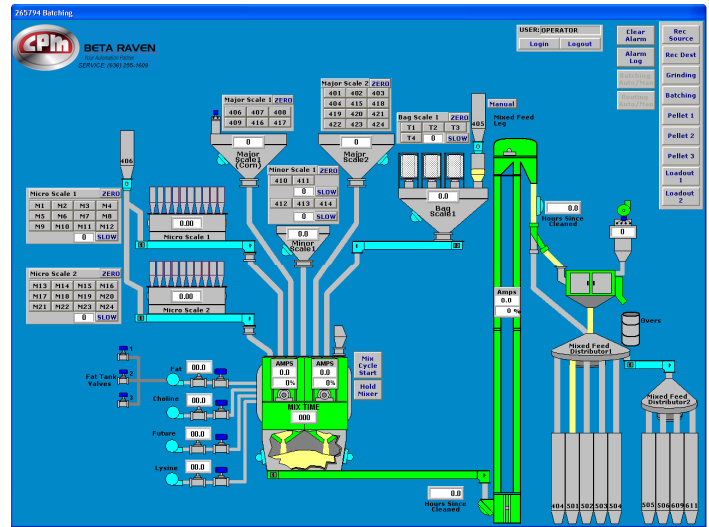
  

Batch	State	Id	Op	Operation	Target	Actual	Devices
1363	Complete	1	0	Draw	68.000	68.000	B101, C101, S1
1363	Begin	1	0	Draw	20.000	0.000	B105, H1, M1
1363	Complete	1	0	Draw	6.000	6.000	B102, C102, S1
1363	Complete	1	0	Draw	6.000	6.000	B121, C121, S3
1363	Complete	1	0	Draw	6.000	6.000	B124, C124, S4
1363	Pending	2	1	DeviceOn			M1
1363	Pending	3	2	Dump			R1, CR1M1, M1
1363	Complete	5	4	Mix	8.000	8.000	M1
1363	Complete	6	5	Draw	10.000	10.000	M1, CM1BX
1363	Complete	6	5	Mix	10	10	M1
1363	Complete	7	6	Dump			M1, CM1BX
1363	Complete	6	5	DeviceOff			M1

Process information is presented graphically in real time using the power of Rockwell Software RSVIEW32. All three modes of operation - maintenance, manual, and automatic, are controlled through the same screens. Distinctive colors and messages provide operators with an instant view of the system status. Allen-Bradley PLC technology provides a reliable, robust system.

All three modes of operation - maintenance,

Our help system is always one keystroke away. All operator manuals are built into the system and are always available to the users. Detailed information about database features and control procedures is provided without searching through a printed manual.



Advanced features such as Statistical Process Control (SPC) and lot tracking are built into the system. Remote access allows our support department to trouble shoot problems quickly and easily. All Beta Raven systems are backed by our 24/7 support department.

CPM Beta Raven's family of automation products and scale systems are the best in the industry, making us the logical choice for your automation needs.



**BETA RAVEN**  
Your Automation Partner